

Mud-Logging GC System

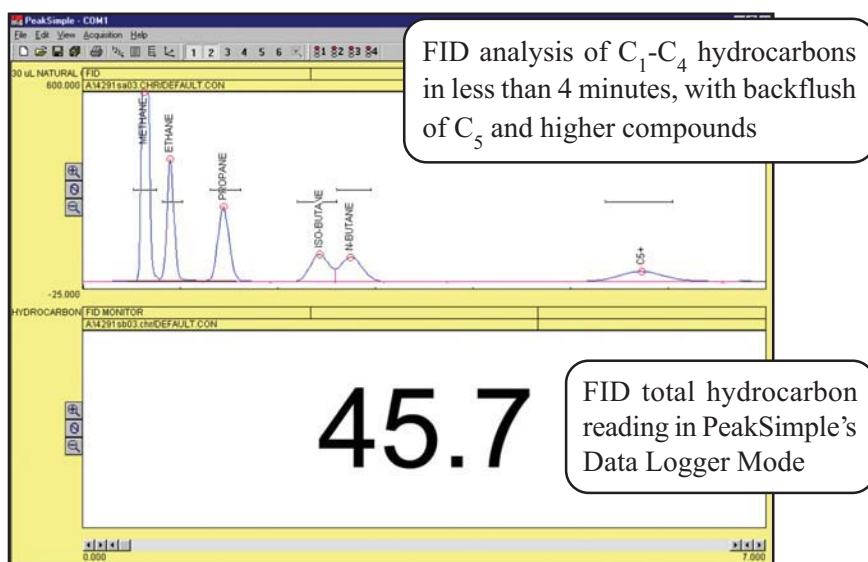


- **Dual FID Detectors**
- **HayeSep-D Column**
- **10-port Gas Sampling Valve**
- **Built-in “whisper quiet” Air Compressor**
- **4 channel PeakSimple Data System**
...on the compact 8610C chassis

The Mudlogging GC system is designed to provide a continuous reading of total hydrocarbons in a gas stream while periodically performing a chromatographic separation of the sample to determine the exact composition of the sample gas stream.

The sample gas stream (at a regulated pressure) is connected to a bulkhead fitting on the GC’s heated valve oven where it flows through the loop of the 10 port gas sampling valve, and also to the second FID detector, which continually monitors the total hydrocarbon content of the gas. Automatically, at a repeating time interval controlled by the operator, the gas sampling valve injects the contents of its loop into the GC column, where it is separated into the constituent hydrocarbon peaks and detected by the first FID detector.

The built-in, four channel PeakSimple data system displays both the continuous total hydrocarbon reading and the separated peaks. An alarm function alerts the operator for any out-of-range readings. Summary reports are easily printed or copied to Excel or similar programs.



8610-0065

Mud-Logging GC System



OPTIONS & UPGRADES: 6 channel USB PeakSimple data system, PTV and split/splitless injectors, additional gas sampling valves (VOLTAGE: for 110VAC, use 8610-0065-1; for 220VAC, use 8610-0065-2)