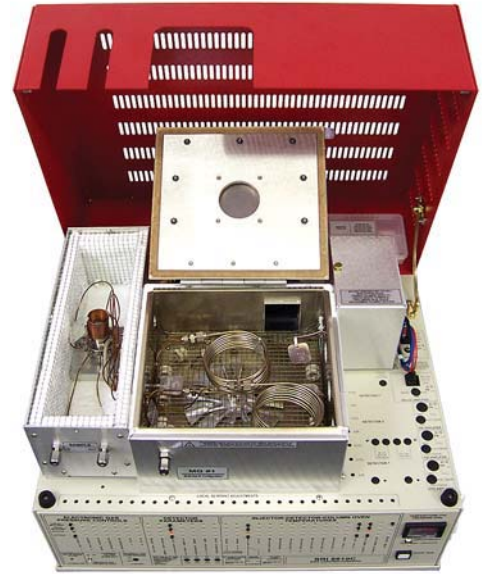


# Multiple Gas Analyzer #1 GC System

- Separates multiple gases with a single injection
- Very tolerant of user adjustments and timing variations
- Simpler than other multiple gas capable systems

The basic model includes:

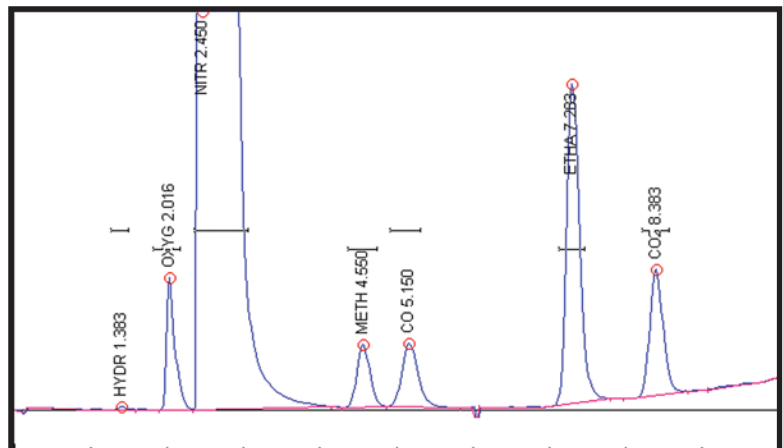
- TCD Detector
- Two Columns - MoleSieve 13X & Silica Gel
- 10-port Gas Sampling Valve and Loop
- 1 channel PeakSimple Data System
- ...on the compact 8610C chassis



The SRI Multiple Gas Analyzer #1 GC System (MG#1) can separate multiple gases with a single injection. It is preplumbed and ready to resolve H<sub>2</sub>, O<sub>2</sub>, N<sub>2</sub>, Methane, CO, Ethane, CO<sub>2</sub>, Ethylene, NO<sub>x</sub>, Acetylene, Propane, Butanes, Pentanes and C<sub>6</sub>-C<sub>8</sub>. The MG#1 is very tolerant of user adjustments and timing variations because it is simpler than other multi-gas capable systems. Unlike complicated and timing-critical gas analysis configurations with three or four columns and three or four valves, the SRI Multiple Gas Analyzer uses a single 10-port gas sampling valve and two packed columns: a 2 meter Molecular Sieve 13X and a 2 meter Silica Gel.

The basic Multiple Gas Analyzer #1 is equipped with a TCD detector for detection limits in the 200-500ppm range. The second option is a TCD-Methanizer-FID configuration, which provides 5ppm detection limits for CO, CO<sub>2</sub> and all hydrocarbons. The third option is a TCD-HID detector combination for detection limits in the 10ppm range for all analytes.

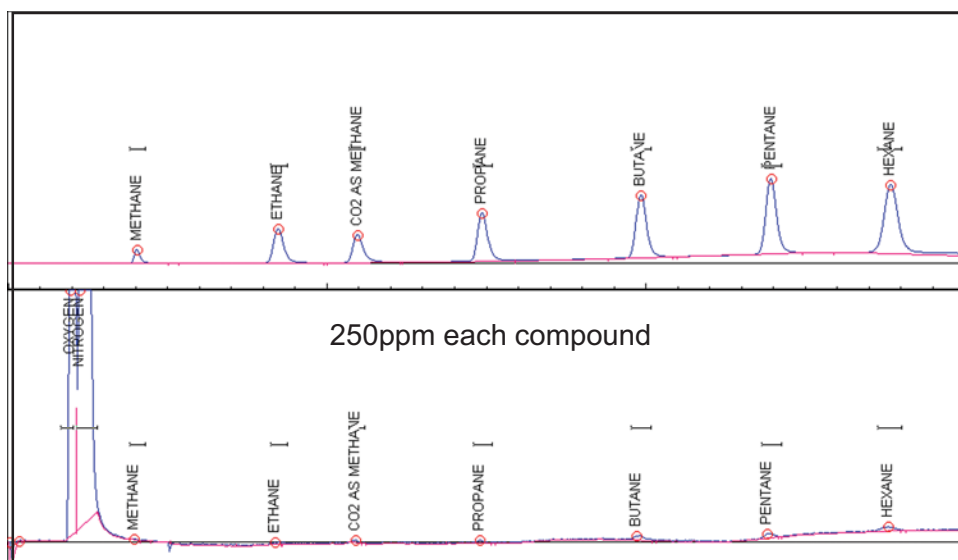
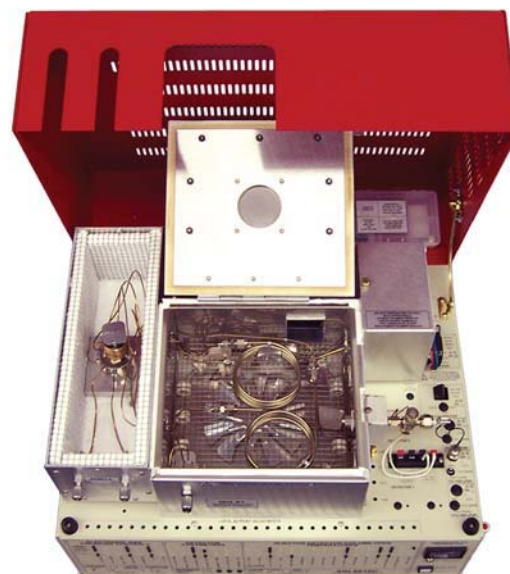
This chromatogram shows the separation of a 1% Gas Mix + 2% ethane sample on a basic TCD equipped MG#1.



# Multiple Gas Analyzer #1 GC System

This optional model includes:

- **TCD Detector**
- **FID-Methanizer**
- **Two Packed Columns**
- **10-port Gas Sampling Valve and Loop**
- **4 or 6 channel PeakSimple Data System**



The FID measures the C<sub>1</sub>-C<sub>6</sub> hydrocarbons, plus CO and CO<sub>2</sub>, which are converted to methane by the Methanizer in the FID jet.

The TCD measures hydrogen, oxygen, nitrogen, methane and other compounds whose concentrations are at least 200-500ppm.

- |                  |   |
|------------------|---|
| <b>8610-0070</b> | <b>Multiple Gas Analyzer #1 with TCD detector and 1 channel PeakSimple data system</b>  |
| <b>8610-0071</b> | <b>Multiple Gas Analyzer #1 with TCD, Methanizer, FID, built-in “whisper quiet” air compressor and 4 channel PeakSimple data system</b> |
| <b>8610-0072</b> | <b>Multiple Gas Analyzer #1 with TCD and HID detectors, and 4 channel PeakSimple data system</b>  |



OPTIONS & UPGRADES: 6 channel USB PeakSimple data system, H<sub>2</sub>-50XR hydrogen generator, additional gas sampling valve, additional detectors  
(VOLTAGE: for 110VAC, use “part number-1” [ex: 8610-0070-1] for 220VAC, use “part number-2”)