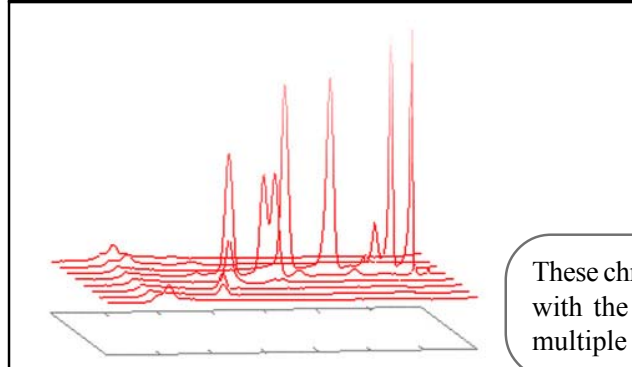
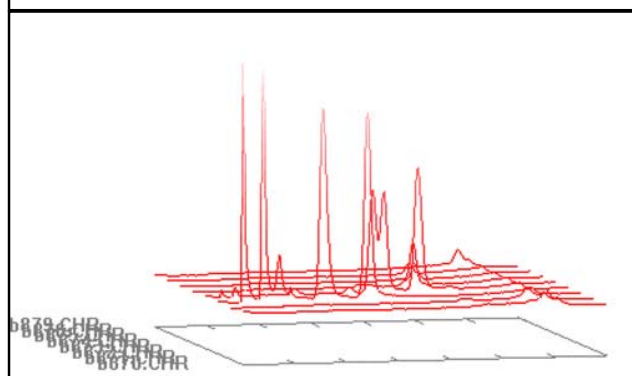
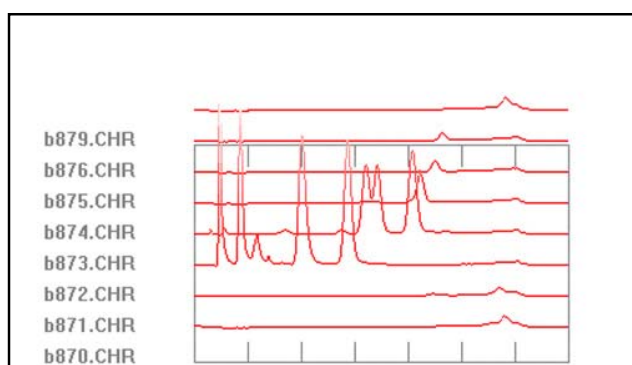
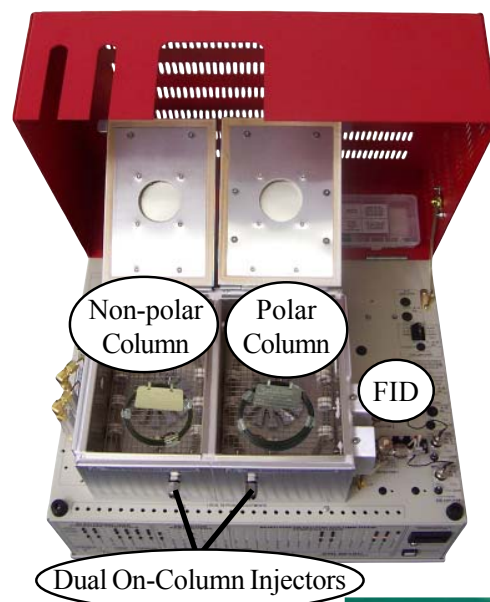


2-Dimensional (2D) GC System

- **FID Detector**
- **Dual On-Column Injectors with Pressure Switching**
- **Dual Capillary Columns (1 polar, 1 non-polar)**
- **Built-in “whisper quiet” Air Compressor**
- **1 channel PeakSimple Data System**
- **...on the 8610D Dual Oven chassis**



The 2D GC System is similar to the TCS GC, but it also permits

true comprehensive 2D separations using pressure switching and modulation. The Two Dimensional GC system allows users to modulate the effluent from the first column, which is non-polar, onto a second column, which is polar, in a series of short chromatographic slices. The polar column may be operated isothermally, or it may be temperature programmed. Peaks which elute from the non-polar column may sometimes be separated more effectively in two dimensions than in one dimension, because the flow is stopped in the non-polar column while the polar separation is achieved. Like the TCS GC, the 2D GC uses a 15-meter MXT-1 in the first oven, and a 30-meter MXT-wax in the second oven. The 2D GC also has dual On-column injectors, but unlike the TCS GC, they feature pressure-switching capabilities.

These chromatograms are two-dimensional analyses of a natural gas standard with the 2D GC. PeakSimple’s 3D display feature allows you to view multiple chromatograms in a 3D format; see page 87 for more information.

8610-5600

2D GC System



OPTIONS & UPGRADES: additional detectors with 4 channel serial or 6 channel USB PeakSimple data system, FID Methanizer, H₂-50 hydrogen generator

(VOLTAGE: for 110VAC, use “part number-1” [ex: 8610-5600-1] for 220VAC, use “part number-2”)

Pre-Configured GC Systems

21